

Semantic Intelligence for Regulatory Compliance

If you're in charge of protecting sensitive data, you know that protecting it from risk is difficult enough without also having to worry about adhering to regulations. But maintaining compliance can sometimes feel as messy as it is necessary.

Regulatory frameworks help businesses mitigate risks, operationalize processes, and maintain customer trust. But mapping security controls to these frameworks can quickly feel overwhelming.

Adding yet another layer of complexity is the fact that different industries and regions can have widely varying data handling and classification requirements.

And let's not even talk about the consequences of slipping up — fines, reputational damage, and possibly a courtroom drama that no one wants tickets to.

Effective data management is critical for compliance, but how can your business protect its data if you don't know what data you have out there, where it's being stored, and who's accessing it?

This Is My Circus and Those Are My Monkeys

Compliance is a critical concern for businesses but staying on top of constantly evolving and complex regulatory requirements can feel like a bit like riding a unicycle on the highwire.

You're constantly having to monitor for and adapt to changing regulations to stay in line with laws and industry standards. Just when you think you've got things figured out, you discover new requirements to manage, and keeping up feels less like governance and more a juggling act.

You need a crystal-clear view into your compliance status, tools to fix any issues, and the peace of mind that you're not one audit away from disaster.

Keep Calm and Stay Compliant

This isn't the circus, and you don't have to do your own stunts. But if you insist, at least let us be your safety net.

Our Compliance Dashboard provides the granular visibility and control you need to stay on track, take proactive measures to address any gaps, and make those audits a breeze.

This Doesn't Have to Be Complicated — or Terrifying

Imagine having quantifiable, documented proof that you're actively protecting and monitoring customer data. Imagine being able to do this in a way that preserves both your team's productivity and your sanity.

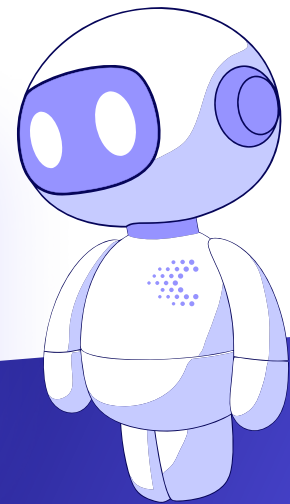
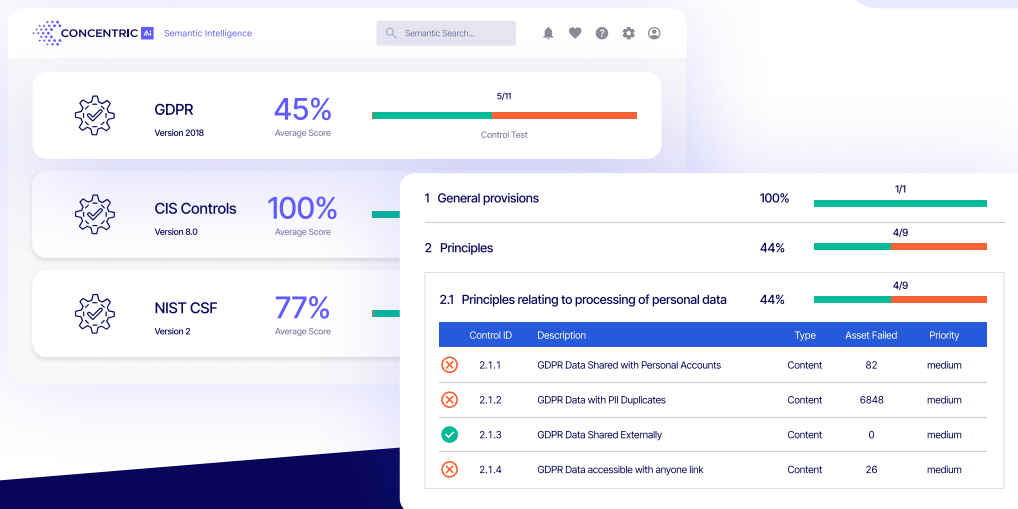
Semantic Intelligence will help pull you out of compliance quicksand and give you relief from those pre-audit sweats. Within the Compliance Dashboard, you can select relevant regulatory frameworks to see their applicable controls and rules.

As an example, let's use GDPR, which is the European Union's data protection law. Click on GDPR to view your organization's average score and then drill down to see areas for improvement. You can get highly specific and see information such as what data has been shared, when it was created, copied, or modified, and who it was shared with.

The solution also shows you the data's type and sub-category as well as all the cloud services it was shared from.

Compliance Quantified

- **Get crystal-clear insights:** Know where you stand with the most common industry and government frameworks — and import any custom requirements, too.
- **Go deep:** Drill down to see where you're out of compliance and either fix violations directly in the tool or let our customer success team help.
- **Micromanage your data:** Easily secure it, track it, and control who accesses it.
- **Automate cleanup:** Keep data for only as long as your customer needs it, or for as long as the data retention policy requires.



About Concentric AI

Concentric AI is intelligent data security made easy. Our platform discovers, classifies, monitors risk, and protects data across cloud and on-premises environments. With AI-driven insights and co-managed services, we help businesses reduce risk, streamline compliance, and eliminate duplicate data records — transforming data from a liability into a well-managed asset.

Contact us today to schedule a live demo and see for yourself how we can help simplify your data security strategy.

Schedule a Demo

