

Semantic Intelligence™ Intelligent Data Security Made Easy

Businesses today are drowning in data. It's growing faster than your inbox on a Monday morning — and the storage costs are just as relentless. With everyone working from everywhere, the cloud taking over, and BYOD policies running wild, data is spread out, moving fast, and constantly changing.

In the meantime, cyberattacks are getting smarter, faster, and sneakier. Collaboration tools have made sharing confidential data as easy as sharing cat memes. Even AI is leaking data. As if that's not enough, compliance requirements are constantly evolving. Just when you think you've got it figured out, there's a new regulation — or five — to juggle.

IT and security teams are basically superheroes... but even superheroes need a break. With limited budgets, understaffed teams, and expansive skills gaps, it's no wonder things feel overwhelming.

The Struggle Is Real

Operationalizing data security has been a challenge for decades. Despite costly investments and countless hours of labor, admins are still flying blind. Legacy data security tools that require regex, trainable classifiers, or other pattern-based methods only catch a small fraction of sensitive data and bury your team in false positives. Who has time to chase ghosts?

You don't just need a tool; you need a partner. Someone to handle the nitty-gritty, help you set the rules, and give you the keys to your data kingdom without taking away your crown.

Key Benefits

Gain superior visibility into your data

Stop sensitive data leakage

Enable AI without expanding your attack surface

Ace your regulatory compliance audits

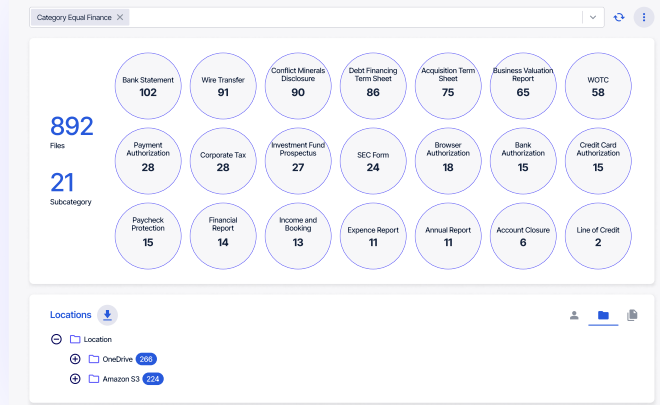
Maximize the efficacy of your existing security tools

Experience faster ROI, smarter policies, and less stress

Your Data, Discovered and Demystified

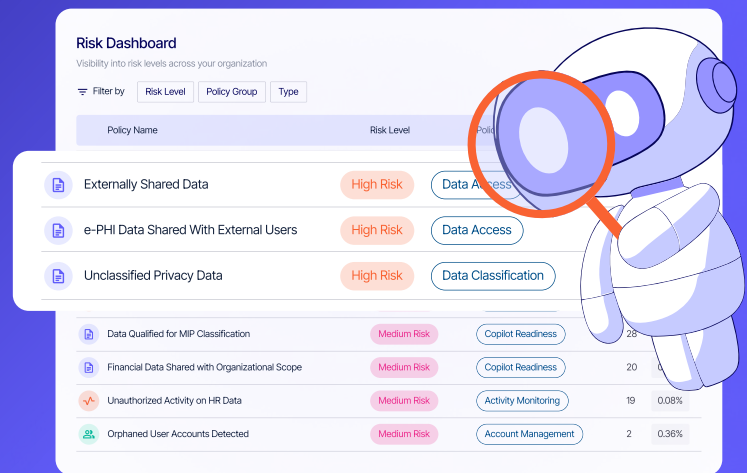
Semantic Intelligence is the power-up your data needs. It connects to your cloud and on-prem repositories within minutes, scanning each record in its entirety. No messy agents, no complex rules, and no need for a PhD in regex. You get a super granular inventory that shows you what types of data records are floating around, where they live, and who's got access to them.

But what truly sets us apart is that our AI understands context, which means we can identify PII, PCI, and PHI with exceptional accuracy, but also intellectual property and other critical business documents that other data security tools often overlook.



The Dashboard That Spots the Danger

Not all data carries the same risk. The key is knowing where to focus your defenses. That's where the Semantic Intelligence Risk Dashboard comes in. It continuously monitors your data and spots the troublemakers: files that are unclassified, misclassified, sitting in the wrong place, or permissions that are way too generous (like shared with the entire company). The Activity Risk Manager calls out sketchy behavior, like sensitive data being funneled into a personal email or unusual activity that screams "something's up," such as sudden privilege escalation followed by a data hoarding spree.



The Power to Protect

Knowing what data you have and what is at risk is only half the battle. The real win is actually doing something about it. That's where Semantic Intelligence flexes its superpowers. With just a few clicks, you can apply classification labels (your other security tools will thank you), relocate sensitive data to safer locations, and eliminate duplicate, near-duplicates, and stale data. You can also tighten up permissions so people can only access what they're supposed to. Better yet, those remediation actions don't stop there—they're automatically applied to new data based on semantic similarity, cutting manual work down to a minimum.



Take the Guesswork Out of Governance

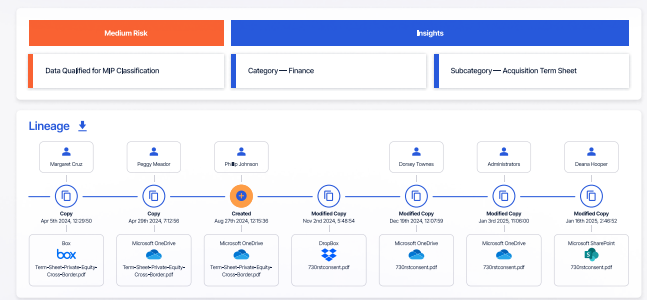
Imagine having quantifiable, documented proof that you're actively protecting and monitoring customer data. Now, imagine being able to do this in a way that preserves your team's productivity and sanity.

Our compliance dashboard takes the stress of staying compliant. It provides a clear view of where you stand with the most common regulation frameworks. You can drill down to see exactly where you're out of compliance and address violations directly within the tool. With our smart data retention policies, you can keep data only for the necessary or permitted amount of time. When customers request that their information be deleted, you can locate it and erase it in record time.



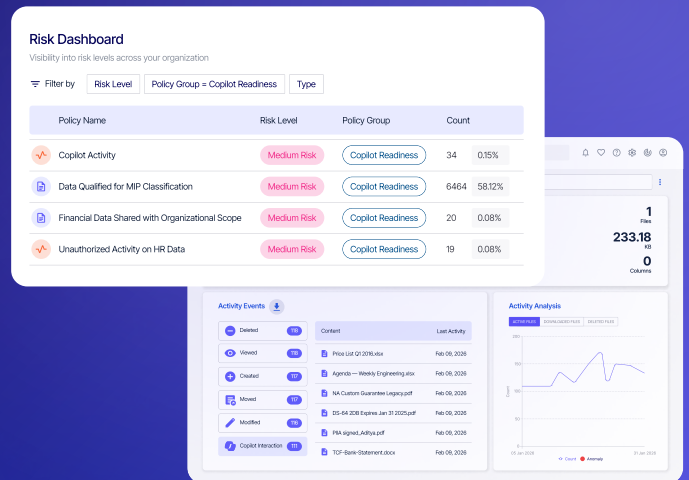
Know Your Data's Story

Got that feeling that something's not right with your data? Or worse, you know it's been breached? Either way, you need to know who touched what, when, and where it went. Use the Semantic Intelligence User Explorer to see exactly what a user viewed, downloaded, or shared. Want the full play-by-play? The data lineage feature provides a comprehensive timeline of every copy, edit, download, and share, complete with users and timestamps, so you don't just have suspicions — you have evidence.



AI Innovation Without Data Exposure

If trying to protect your data from AI has you feeling like you're living on the set of Mission: Impossible, take a deep breath and relax because we've got it covered. Semantic Intelligence uses patented, context-aware discovery and continuous monitoring to keep PII, PCI, PHI, intellectual property, and other business-critical data from leaking through AI assistants or proprietary AI workloads.

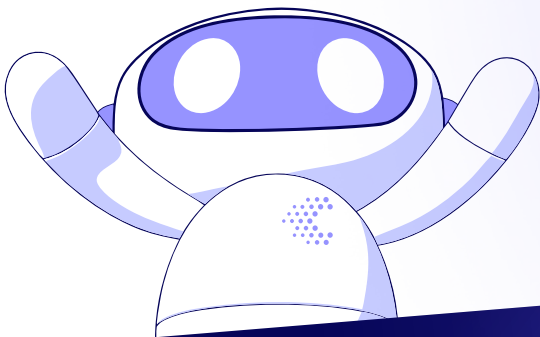


Behind the scenes, our Risk Dashboard does the heavy lifting. It flags data eligible for MIP classification, highlights sensitive content with overly generous permissions, and shows exactly what Copilot has shared, with whom, and when. And if you're building your own AI in-house, Semantic Intelligence makes sure your models are trained only on carefully curated datasets, so your data doesn't wander where it shouldn't. The result is your data stays safe, and you stay in control.

You Don't Have to Do This Alone

At Concentric AI, we don't just hand you a platform, give you a thumbs-up, and vanish until renewal time. We're in this with you. Our customer success team works side by side with yours to deliver real, measurable results.

Whether you've got a rockstar team of data security experts ready to handle the day-to-day, or you're still figuring out where to begin, we've got your back, with three tiers of advisory and managed services tailored to your needs.



The Results You've Been Waiting For

What does this mean for you? It means finally having the clarity you've been craving. No more wondering, "Where is our sensitive data?" or "Who can access this?" You'll know exactly what you have, what's at risk, and have the tools you need to protect it. Say goodbye to confusion and hello to control.

About Concentric AI

Concentric AI is intelligent data security made easy, helping businesses discover, understand, and protect sensitive information across cloud and on-prem environments. Its AI-powered data security governance solutions deliver precise visibility, automated protection, and safe AI adoption—so organizations can reduce risk, strengthen compliance, and confidently innovate without compromising what matters most.

Contact us today to schedule a live demo and see for yourself how we can help simplify your data security strategy.

Schedule a Demo

