

Semantic Intelligence™ for Data Access Governance

Data sharing has never been easier, and it brings clear benefits: better collaboration, improved workflows, and faster, more informed decision-making.

But uncontrolled sharing also increases the risk of data leak or breach. With internal and external users connecting from many different devices and locations, it is critical to monitor and control who has access and to what data.

And it's not just users. Other systems and applications, including Gen AI tools (ever used Microsoft Copilot?) are also accessing your sensitive data.

You also have to follow strict requirements for how your data is accessed, stored, and processed to stay compliant with the data protection and privacy laws relevant to your industry.

But you can't just lock it all down behind an iron curtain of control because then you'll disrupt operations for your users who need access to data to do their jobs.

To keep your sensitive data protected — and compliant, you need intelligent data access governance that aligns with your zero-trust policies and your business goals.

To Share or Not to Share, That Is the Question

Every access point is a vulnerability. The more your data is accessed, the greater the risk of it being misused or breached — and the greater the chance that your organization will incur the financial loss, reputational damage, and legal consequences that accompany this.

But it's a fine line to walk. While you need to protect your data from unauthorized access, overly strict policies are hindering collaboration and causing operational issues, which is impacting productivity — and your bottom line.

You're also required to maintain compliance with data protection regulations like GDPR, HIPAA, PCI DSS, and CCPA. But they continue to be updated, and you don't have the time, money, or expertise to keep up with everything.

**You Get Access!
Everyone Gets
Access!**

Oprah's meme-worthy cars-for-everyone giveaway in the early 2000s was a slam dunk for ratings, but deciding who gets access to your sensitive data requires a far more prescriptive approach.

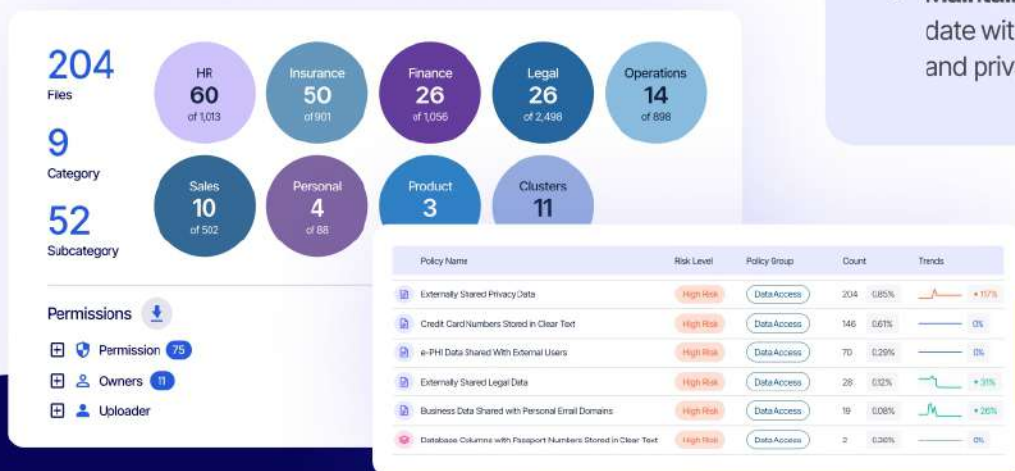
Every Move You Make, Every Step You Take

The key to securing your sensitive data is to know where it is, what's being done to it, and by whom. Concentric AI's Semantic Intelligence platform facilitates a robust zero-trust approach to data access governance where your users only have access to what they need, and every attempt to access is verified.

The platform's deep learning capabilities allow it to understand the context of every data record, which results in far more accurate classification and access policies.

It flags issues such as sensitive data that is accessible to your entire organization or to external users, lack of classification or incorrect classification, excessive permissions, risky sharing, and unauthorized access. And it does this without depending on complex rules or pattern-matching.

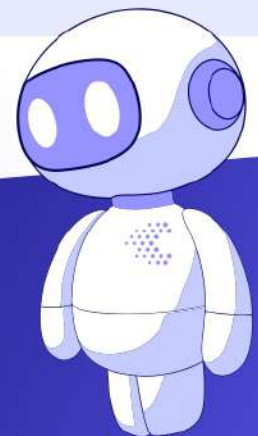
Once these risks have been identified, you can set access policies that align with regulatory requirements directly in the platform. The platform will autonomously enforce these policies if sharing and access issues are found, or it will integrate with other security tools and cloud APIs to address them.



Don't Give Away the Keys to the Kingdom

Protect your most valuable assets with a solution that verifies every attempt to access, every time. It's like the London Tower Guard, but for your data and without the fancy uniform.

- **Uncover risks:** Identify sensitive embedded data that may be exposed to risk.
- **Fix issues fast:** Take advantage of built-in remediation actions.
- **Rein in GenAI:** Ensure your GenAI apps only reveal data they're permitted to access.
- **Leverage other frameworks:** Read or apply labels from other classification labels.
- **Maintain compliance:** Stay up to date with applicable data protection and privacy regulations.



About Concentric AI

Concentric AI is intelligent data security made easy. Our platform discovers, classifies, monitors risk, and protects data across cloud and on-premises environments. With AI-driven insights and co-managed services, we help businesses reduce risk, streamline compliance, and eliminate duplicate data records — transforming data from a liability into a well-managed asset.

Contact us today to schedule a live demo and see for yourself how we can help protect your most sensitive data with data access governance that lets you track and control its every move.

[Schedule a Demo](#)

